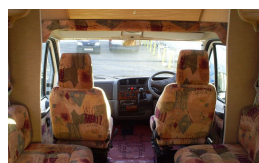


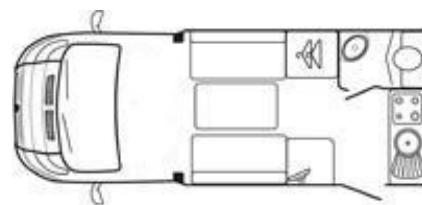
SOLD Autocruise Starfire 2000 (2000 Model)



Overview

£13,995

Autocruise Starfire 2000 (2000 Model)



A compact 2 berth motorhome from Autocruise.



Layout:

Front Lounge, Rear Kitchen and Corner Washroom.

Lounge:

2 Opposing bench seats, heki roof light, above cab locker, cocktail cabinet, under bench storage, high level lockers and a wardrobe.

Kitchen:

4 Burner gas hob, oven and grill, 3 way fridge, sink and drainer, storage units and cupboards.

Washroom:

Cassette toilet, sink, vanity unit, shower, skylight.

Heating:

Carver hot air blown heating system.

Carver Cascade Rapide hot water system.

Windows:

Double glazed with nets and blinds through out.

Specifications

Make	Autocruise
Model	Starfire 2000
External Length	5.49m / 18'0"
Width	2.19m / 7'2"
Unladen Weight	2371kg
MTPLM	2800kg
Chassis	Peugeot Boxer 270 TD SWB
Engine / Gears	1905cc manual
Millage	36272
Year 1st registered	01 05 2000
Height	2.87m 9'4"
MOT	30 11 2015